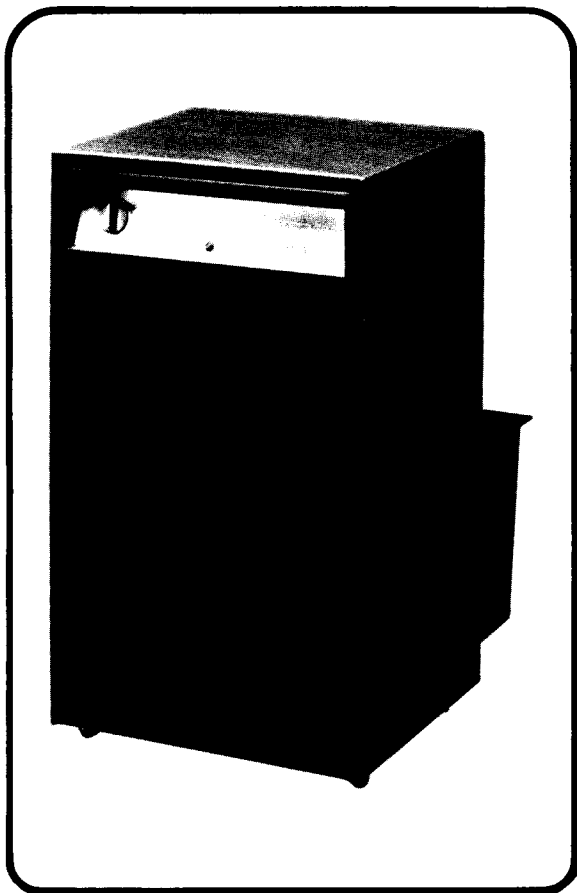


ILLUSTRATED PARTS BREAKDOWN



**DEHUMIDIFIER MODELS:
AQUA-DRI®
25EB3, 30EB3
25EB4, 30EB4**

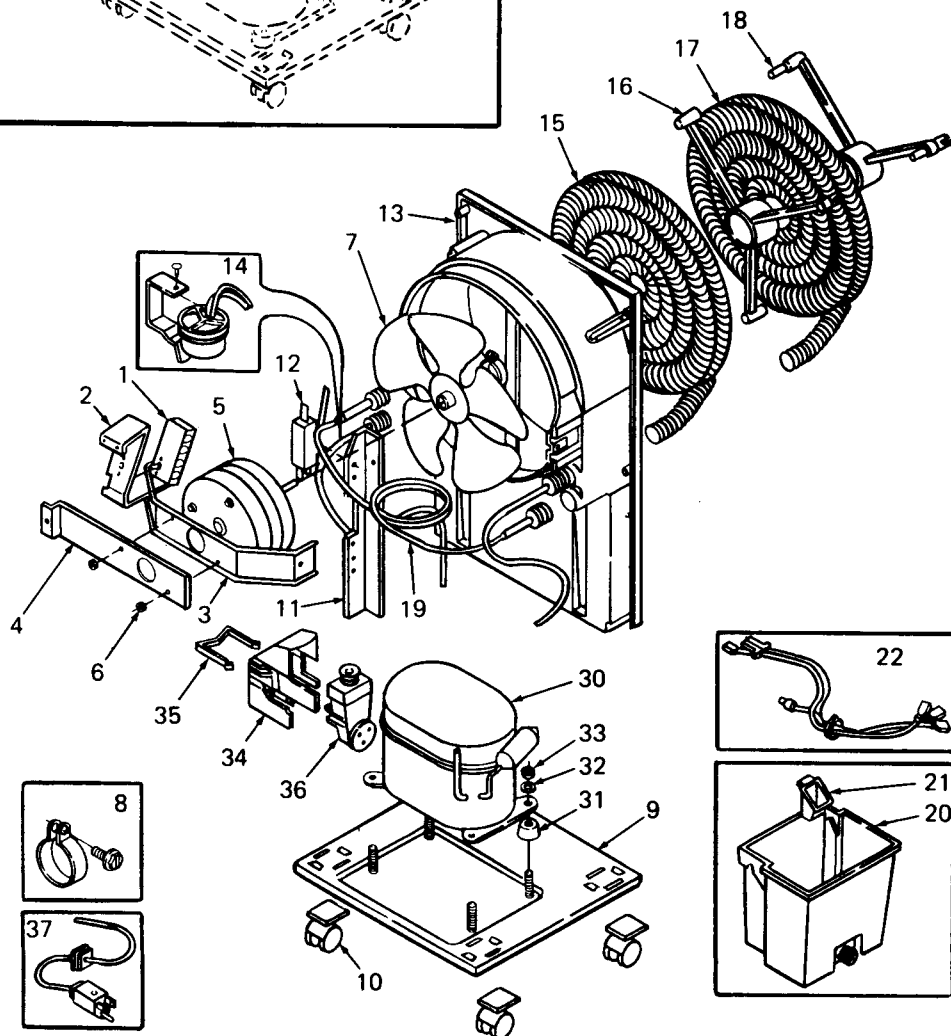
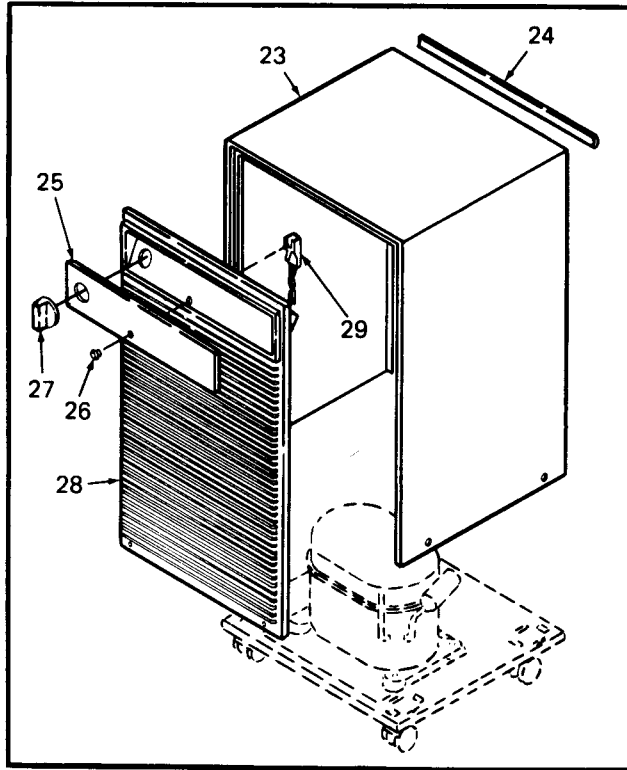


SPECIFICATIONS

Voltage	115 VAC ±10%/1PH/60 Hertz
Size	22-5/16" H., 12-5/8" W., 11-1/2" D.
Shipping Weight (Approx)	25EB3 and 25EB4 50 LBS. 30EB3 and 30EB4 52 LBS.

Specifications subject to change without notice.

Models:	25EB	30EB
Capacity, Pint	25	30
Amps	5.0	6.0
Ref. Charge/OZ. (Grams)	R-500/9.5 (269)	R-500/7.5 (212)
Oil Charge/OZ.	13	12



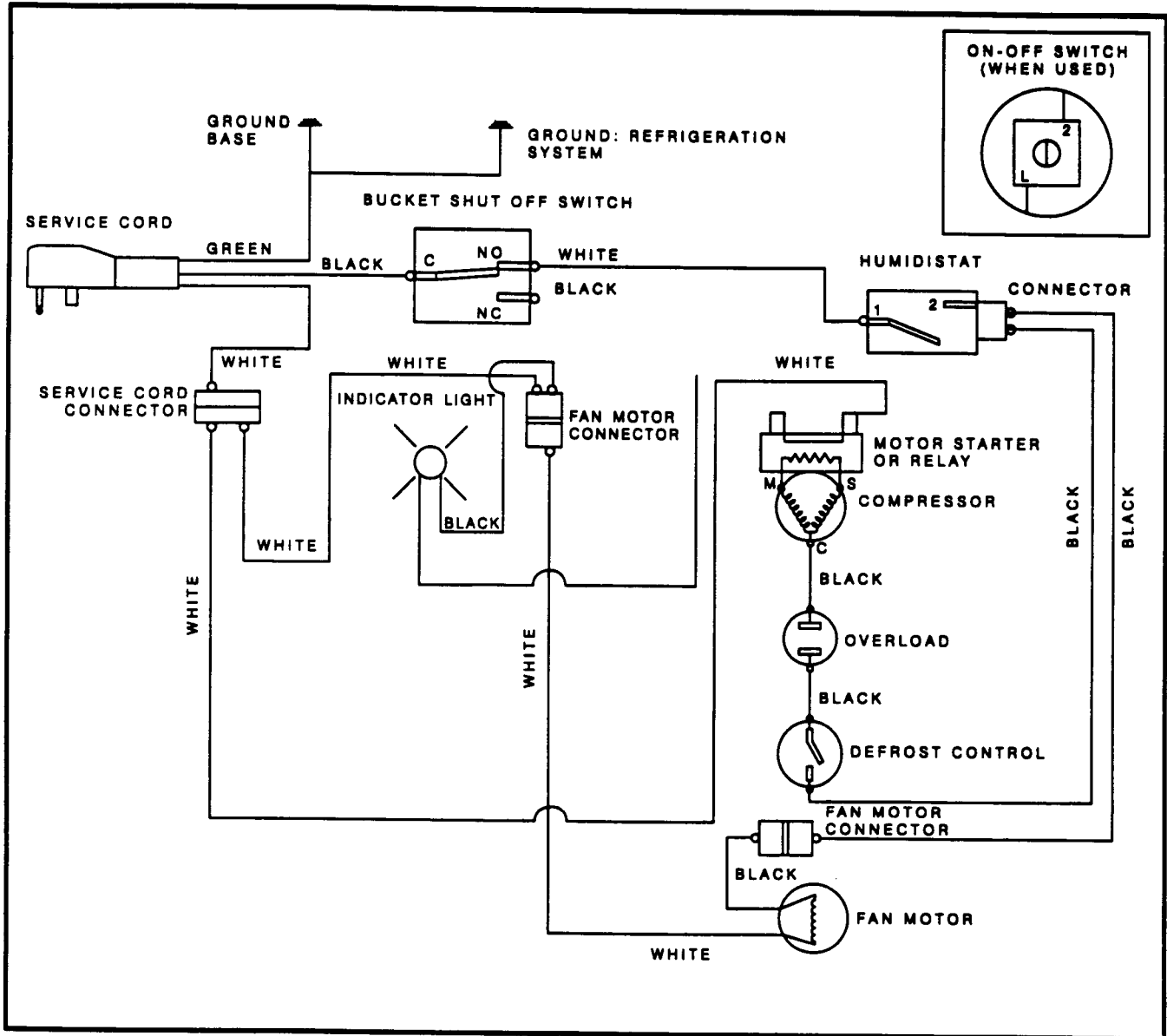
PARTS LIST

ITEM NO.	DESCRIPTION	25EB3	25EB4	30EB3	30EB4
1	Humidistat	400900	400900	400900	400900
2	Humidistat Bracket	400902	400902	400902	400902
3	Motor Bracket	400906	400906	400906	400906
4	Dampener Bracket	400907-001	400907-001	400907-001	400907-001
5	Fan Motor	400908-002	400908-002	400908-002	400908-002
6	Motor Mounting Nut	400909	400909	400909	400909
7	Fan Blade	400910	400910	400910	400910
8	Clamp	400911-001	400911-001	400911-001	400911-001
9	Base	400913	400913-001	400913	400913-001
10	Caster (4 Required)	400914	400914	400914	400914
11	Switch Bracket	400915	---	400915	---
12	Bucket Switch	400916	400916	400916	400916
13	Shroud	400917	400917-001	400917	400917-001
14	Defrost Thermostat	400918-001	400918-001	400918-001	400918-001
15	Condenser	400920	400920	400920	400920
16	Inner Evaporator Clamp	400921	400921	400921	400921
17	Evaporator	400922	400922	400922	400923
18	Outer Evaporator Clamp	400924	400924	400924	400924
19	Capillary Tube	400925	400925	400926	400926
20	Bucket	400928	400928	400928	400928
21	Float	400929	400929	400929	400929
22	Wiring Harness	400930-001	400930-001	400930-001	400930-001
23	Wrapper	400931	400931	400931	400931
24	Trim	400932	400932	400932	400932
25	Trimplate	400933	400933	400934	400934
26	Lens - Amber	400936	400936	400936	400936
27	Knob	400937	400937	400937	400937
28	Front Panel	400938	400938	400938	400938
29	Light	400939-001	400939-001	400939-001	400939-001
30	Compressor	400940	400940	400941	400941
31	Compressor Grommet	400942	400942	400942	400942
32	Compressor Washer	400943	400943	400943	400943
33	Compressor Nut	400944	400944	400944	400944
34	Terminal Cover	400947	400947	400947	400947
35	Cover Strap	400948	400948	400948	400948
36	Overload/Relay Assembly	400945	400945	400946	400946
37	Power Supply Cord	400949	400949	400949	400949

NOT SHOWN

Switch to Shroud Clip	---	400971	---	400971
-----------------------------	-----	--------	-----	--------

ELECTRICAL DIAGRAM



AQUA-DRI® is a registered trademark of EBCO Manufacturing Company

EBCO® MANUFACTURING COMPANY

265 N. Hamilton Rd. • P.O. Box 13150 • Columbus, OH 43213-0150 • 614/861-1350 • Fax: 614/861-5017

Printed in U.S.A.
Copyright 1994 EBCO Manufacturing Co.